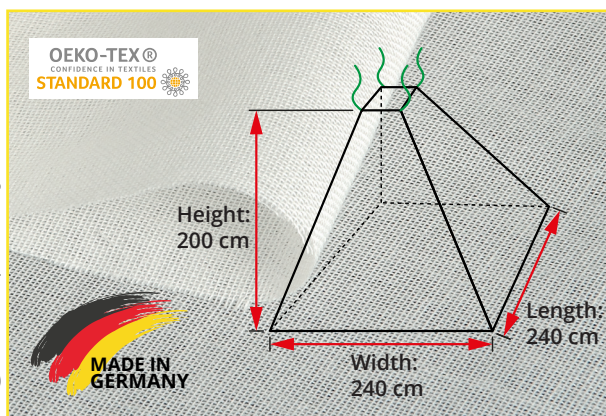


High frequency



- universal canopy for large-area shielding of high-frequency electromagnetic waves
- semi-transparent
- 100 % textile properties
- universal design (pyramid shape, very spacious)
- The Swiss Shield Naturell-BU universal bed canopy is made of Swiss Shield Naturell, a decorative, unbleached, high-frequency shielding cotton fabric with an absolutely textile character.

The fabric has the usual textile properties of cotton.

Mounting is simple and variable in width and height.

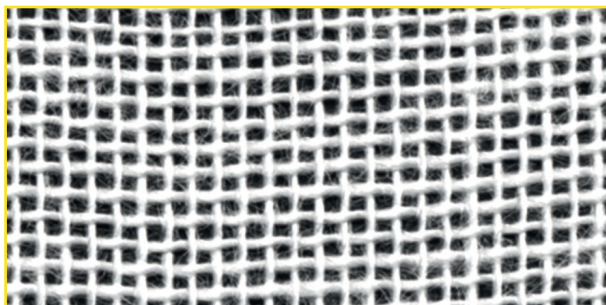
No electrical devices may be operated inside the canopy, please observe the necessary distances from lamps, hot light sources and walls (abrasion) to the fabric.

No vapours or other chemical additives that pose a health risk.

With canopy underlay SWSH-N-SN, this canopy shields low-frequency alternating electric fields even without earthing.

**Order-No.: 101032**

Short-Desc.: SWSH-N-BU



### Scope of application

children's and sleeping area (single bed)

### Scope of delivery:

- bed canopy incl. 4 x 2 hanging straps sewn on - length 100 cm, 4 x dowels and 4 x hooks

### Bed canopy

#### Swiss Shield Naturell- BU (Universal)

Type	MHz	dB	in %
DVB-T2	470 - 690	42	> 99,99
LTE / 5G wide	700 - 750	42	> 99,99
GSM, LTE	920 - 960	40	~ 99,99
GSM, LTE	1800 - 1880	36	> 99,9
DECT	1880 - 1900	36	> 99,9
LTE, 5G wide	2110 - 2170	34	> 99,9
W-LAN 2400	2400 - 2500	33	> 99,9
5G fast	3400 - 3700	28	> 99,0
W-LAN 5200	5150 - 5350	24	> 99,0

### Technical data

length:	240 cm / roof 50 cm ± 2 %
width:	240 cm / roof 50 cm ± 2 %
height:	200 cm ± 2 %
colour:	ecru
accessibility:	by simply lifting
mesh size:	< 1mm x 1 mm (by simply lifting)
composition:	82% cotton 17% copper 1% silver
basic material:	Swiss Shield Naturell
properties:	good washability, antistatic
washing cycles:	~ 25 x
basis for inspection:	Oeko-Tex 100 Class 1 (baby underwear) IEEE Standard 299™-2006
Oeko-Tex 100:	ZHYO 070054 TESTEX
shielding effectiveness:	max. ~ 44 dB (> 99,99 %)

### Care instructions



wash very gently  
(delicate or wool wash cycle at 30 °C)



gentle ironing at level 1  
(ironing at a low temperature)



bleaching not permitted  
no detergent with bleach



do not tumble dry

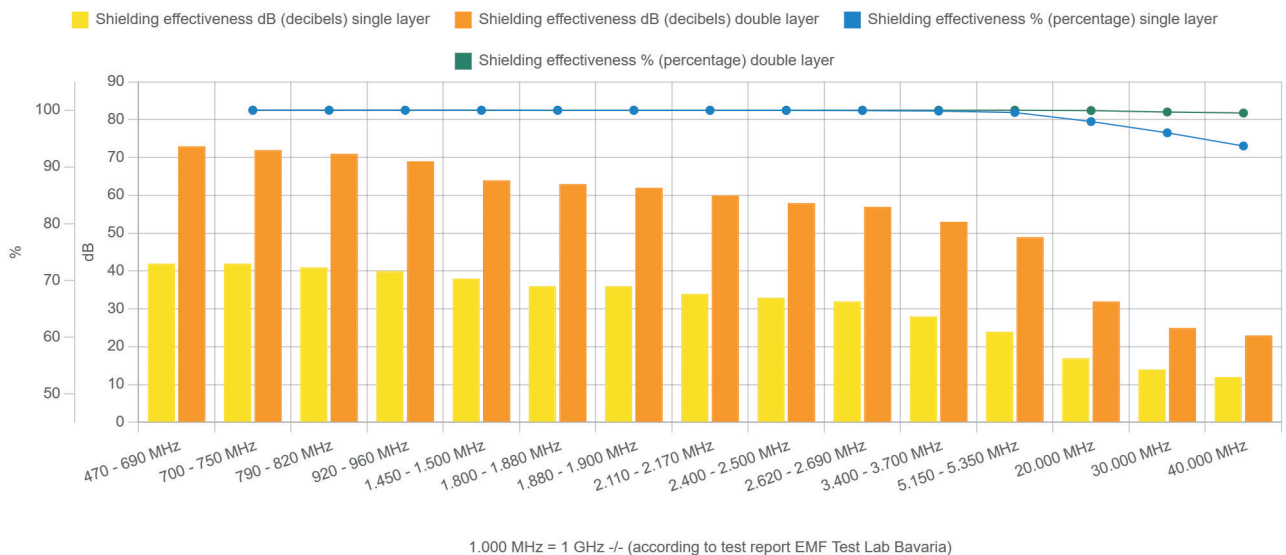


do not dryclean

Type	MHz	Description
DVB-T2	470 - 690	digital video broadcasting – terrestrial, 2nd generation, TV via antenna
LTE / 5G wide	700 - 750	from 4G, now 5G NR without beamforming / MIMO
GSM, LTE	920 - 960	from 2G - D1, now 5G NR without beamforming / MIMO
GSM, LTE	1800 - 1880	from 2G - D2, E network, now 5G NR without beamforming / MIMO
DECT	1880 - 1900	wireless phone
LTE, 5G wide	2110 - 2170	from 3G, formerly UTMS, now 5G NR without beamforming / MIMO
W-LAN / WiFi 2400	2400 - 2500	wireless LAN
5G fast	3400 - 3700	5G NR - New frequency band with beamforming / MIMO
W-LAN / WiFi 5200	5150 - 5350	wireless LAN

Shielding values: According to test report: EMF Test Lab Bavaria

Shielding effectiveness - Swiss Shield Naturell - 470 MHz to 40.000 MHz (40 GHz)



## Home textiles

### Washing instructions incl. symbols (DIN EN ISO 3758:2012)

#### Content - Washing options

Detergent	1	Washing test - Biologa Danell shielding textiles	4
Machine washing	2	Further information	12
Hand wash	3	Frequently asked questions	12

#### Applies to the following products

HOME TEXTILES	Topas CS, Topas SN, Swiss Shield Naturell, Swiss Shield Evolution, Swiss Shield Daylite, Swiss Shield Wear, Swiss Shield Ultima, Sunshine 64, Dali, Picasso, New Antiwave
CANOPIES	Topas-BE, Topas-BD, Topas-BU, TOPAS-SN Swiss Shield Naturell-BE, Swiss Shield Naturell-BD, Swiss Shield Naturell-BU Swiss Shield Evolution-BE, Swiss Shield Evolution-BD, Swiss Shield Evolution-BU Swiss Shield Daylite-BE, Swiss Shield Daylite-BD, Swiss Shield Daylite-BU
CLOTHING	Antiwave Women-Shirts, Shorts, Leggings, Antiwave Men-Shirts, Shorts, scarfs, Beanies

## Best care

### Detergent

#### Tested and recommended detergents

##### Ecover / Wool and delicates detergent

###### Ingredients:

- 5-15 %: Anionic surfactants
- < 5 % Non-ionic surfactants
- Soap
- Fragrances - Limonene
- Preservatives
- 2-Brom-2-Nitropropan-1,3-Diol
- Water
- Table salt
- Citric acid

##### Sodasan / Wool & Fines

###### Ingredients:

- < 30 % water
- 5-15 % sugar surfactant (non-ionic surfactant)
- Coconut fatty alcohol sulphate (anionic surfactant)
- < 5 % evaporated salt
- Alcohol (ethanol)
- Vegetable lecithin
- Citrate
- Natural perfume oil
- Limonene
- Geraniol
- Preservative
- 2-Brom-2-Nitropropan-1,3-Diol

#### Detergent and laundry quantity

##### Detergent quantity:

- Always use as less detergent as possible. As a rule, umbrella textiles are only slightly dusty.
- **Ecover: approx. 20 ml**
- **Sodasan: approx. 20 ml**  
(Further detergent recommendations:
- Sonett sensitive detergent
- Sonett olive detergent for wool and silk
- Sonett Olive Detergent for Wool and Silk sensitive

##### Quantity shielding textiles

- Fill the laundry drum only with shieling materials.
- You will find the max. laundry load in the delicates programme in the instructions for your washing machine. (usually 1.2 - 1.5 kg)

#### Wash test

Biologa shielding textiles can usually be washed 40 times and more. The screening attenuation, as with all screening textiles, decreases during this process, but the remaining function still fulfils a strong high-frequency reduction (min. 90 %).

You can see the complete washing test in the appendix (page 10).

## Washing machine

### Machine washing

#### Individual steps

**M1: 30 °C delicates/wool wash / DO NOT SPIN!**

This wash cycle has a particularly gentle mechanical treatment. Reduce the amount of laundry considerably (fill the drum only up to one third). Set the appropriate washing programme.

(Antiwave products 40 °C delicates)

**M2: Do not bleach**

Bleaching is not possible. Use only bleach-free detergents. If in doubt, try on a concealed area or sample.

**M3: Do not tumble dry**

The textiles do not tolerate tumble drying.

**M4: Do not iron hot**

Maximum temperature of the iron soleplate of 110 °C. Also corresponds to the iron temperature level „polyacrylic/polyamide (nylon) /acetate“. Do not iron with steam. Iron with a dry intermediate cloth if necessary. Do not warp.

**M5: Professional cleaning**

Dry cleaning is not possible. Do not treat with solvents. Do not use stain removers containing solvents.

No wet cleaning possible.

**M6: Natural drying (optional)**

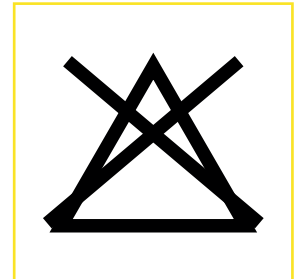
Drying on the clothesline in the shade

**M7: Natural drying (optional)**

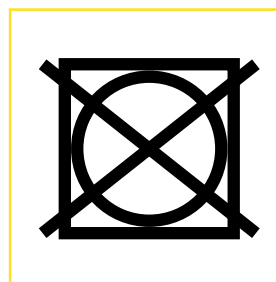
Drying on the clothesline from a dripping wet state in the shade



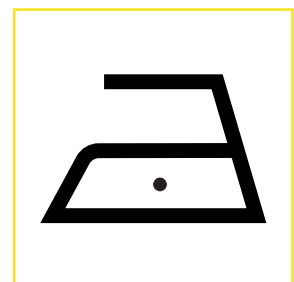
M1: WASH / SPIN



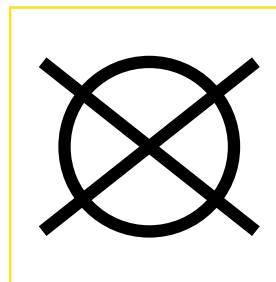
M2: BLEACHING



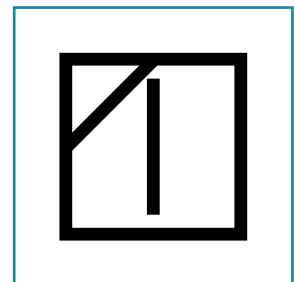
M3: TUMBLER - DRYING



M4: IRONING



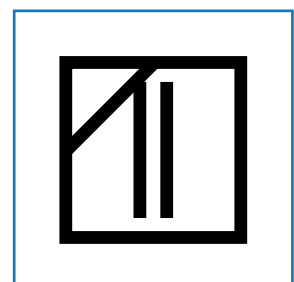
M5: Professional cleaning



M7: NATURAL DRYING 1

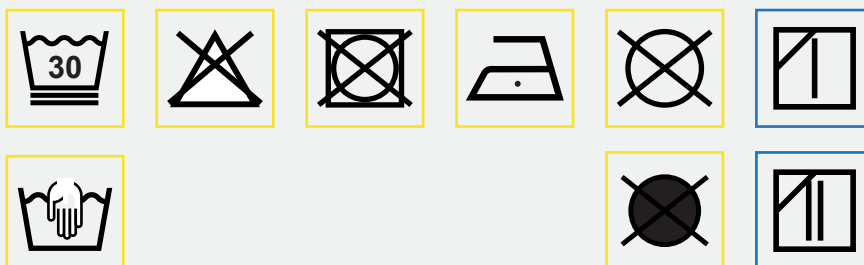
#### Pre-drying

See Fig. 1 (next page)



M8: NATURAL DRYING 2

### General overview of applicable washing symbols



CARE CODE: **AXXAXBX**

The above information corresponds to the current state of development. In any case, they are to be regarded as non-binding, as we have no influence on the washing and the conditions regarding water etc. vary locally. Claims arising from this information are therefore excluded. The same applies to the commercial and technical advice and information provided free of charge and without obligation. We therefore recommend that you carry out your own tests to determine whether the product is suitable for the intended use. With the publication of these versions, all previous technical information (leaflets, installation recommendations and other versions intended for similar purposes) become invalid.

\*\*\*Biologa Danell GmbH • Hauptstraße 27 • 72336 Balingen • +49 7433 955 7172 • info@biologadanell.com • www.biologadanell.com

## Washbasins, tubs

### Hand wash

#### Individual steps

H1: Hand wash,

Water temperature lukewarm to max. 30°C.

1. Fill your washbasin or, depending on the size, your bathtub with lukewarm water.

2. Add a teaspoon of detergent (e.g. ecover / Sodasan). Wool detergent, mild detergent without chlorine, without bleach, without optical brighteners. Do not use fabric softener.

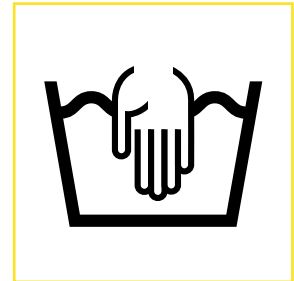
3. Place the textile in the water. Soaking time is usually not necessary as the textile is usually only slightly dusty and not excessively soiled. If so, then less than one minute.

4. Place the textile floating in the water, avoid kneading, wringing, rubbing, strong rubbing and twisting.

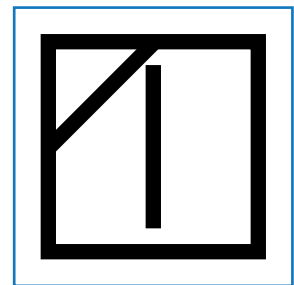
5. Rinse the textile in clean water. Do not spray or rinse under running water. Repeat the process approx. 2 x

6. For pre-drying and subsequent damp hanging, it is recommended to lay the textile on a towel and gently roll it up including the textile. You can also treat the textile as described under H2.

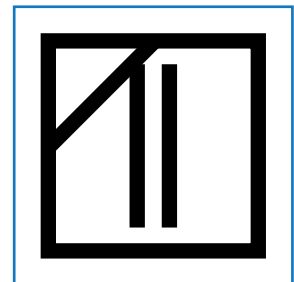
7. Dripping wet hanging without the towel technique is also possible as indicated in H3.



H1: Hand wash



H2: Natural drying  
Clothesline - Shade



H3: Natural drying  
Clothesline dripping wet - shade

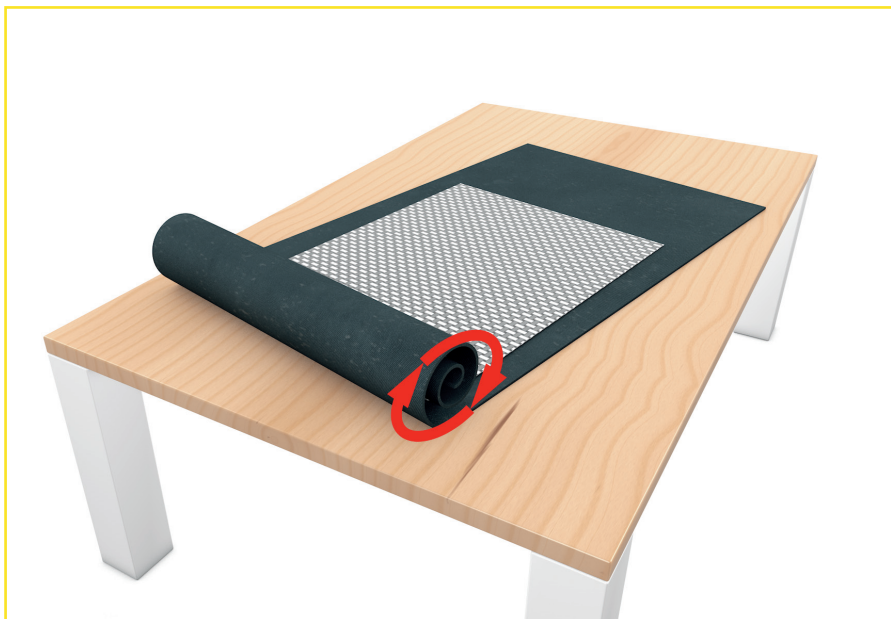


Fig. 1: Pre-dry in towel - hand wash and machine wash

The above information corresponds to the current state of development. In any case, they are to be regarded as non-binding, as we have no influence on the washing and the conditions regarding water etc. vary locally. Claims arising from this information are therefore excluded. The same applies to the commercial and technical advice and information provided free of charge and without obligation. We therefore recommend that you carry out your own tests to determine whether the product is suitable for the intended use. With the publication of these versions, all previous technical information (leaflets, installation recommendations and other versions intended for similar purposes) become invalid.

\*\*\*Biologa Danell GmbH • Hauptstraße 27 • 72336 Balingen • +49 7433 955 7172 • info@biologadanell.com • www.biologadanell.com

## Wash test

### Washing test - Biologa Danell shielding textiles

#### Test machine specifications

Type: Bauknecht WA Sensitive 44 Di

#### Settings used:

- Programme: Delicate laundry 30 °C (curtains and delicate clothes)
- Max. load: 1.5 kg
- Water consumption: 60 litres
- Consumption: 0.4 kWh
- Duration: 0:46 hrs.
- Spin: OFF
- No prewash
- No fabric softener
- No cold wash

#### Laundry quantity

- 7 samples each approx. 1 sqm/per piece (ins. 1.5 kg)
- Topas CS
- Sunshine 64 (ecru/white)
- Swiss Shield Naturell
- Swiss Shield Evolution
- Swiss Shield Daylite
- Picasso
- Dali

#### Additional information

- Water quality varies from place to place. You can ask your waterworks for the current data. For copyright reasons, the water quality data from the company headquarters cannot be published here.
- The settings of the washing modes of your washing machine may differ from those used here. You will find them in the instruction manual of your washing machine.
- The environment in which the textile is used has an influence on its durability (salt water, chemical substances, etc.).

#### Detergents used

##### Ecover / Wool and delicates detergent

#### Ingredients:

- 5-15 %: Anionic surfactants
- <5 % Non-ionic surfactants
- Soap
- Fragrances - Limonene
- Preservatives
- 2-Brom-2-Nitropropan-1,3-Diol
- Water
- Table salt
- Citric acid

##### Sodasan / Wool & Fines

#### Ingredients:

- <30 % water
- 5-15 % sugar surfactant (non-ionic surfactant)
- Coconut fatty alcohol sulphate (anionic surfactant)
- <5 % evaporated salt
- Alcohol (ethanol)
- Vegetable lecithin
- Citrate
- Natural perfume oil
- Limonene
- Geraniol
- Preservative
- 2-Brom-2-Nitropropan-1,3-Diol

#### Detergent quantity

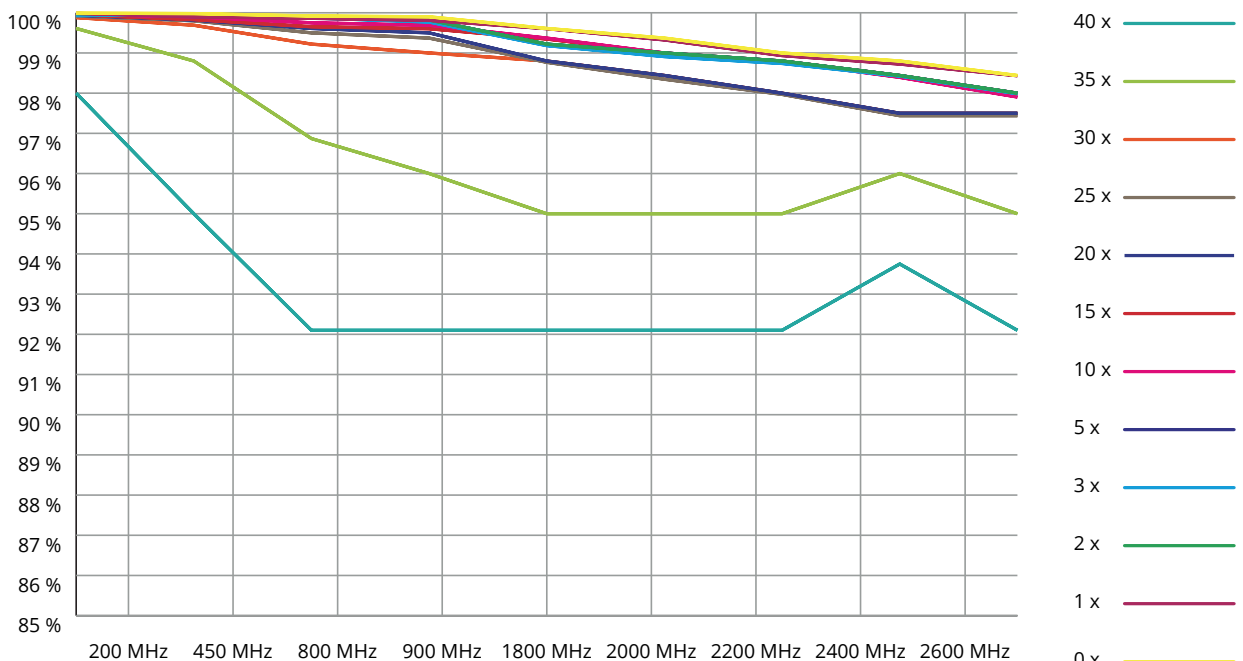
- Ecover: 20 ml
- Sodasan: 20 ml

#### Comparative measurements

- The comparative measurements were carried out with an ADVANTEST R3131 incl. generator (9 kHz-3 GHz).
- The comparative measurements were always carried out with the same environmental variables as far as possible.
- The 2021 batch of all umbrella textiles was used as a reference.

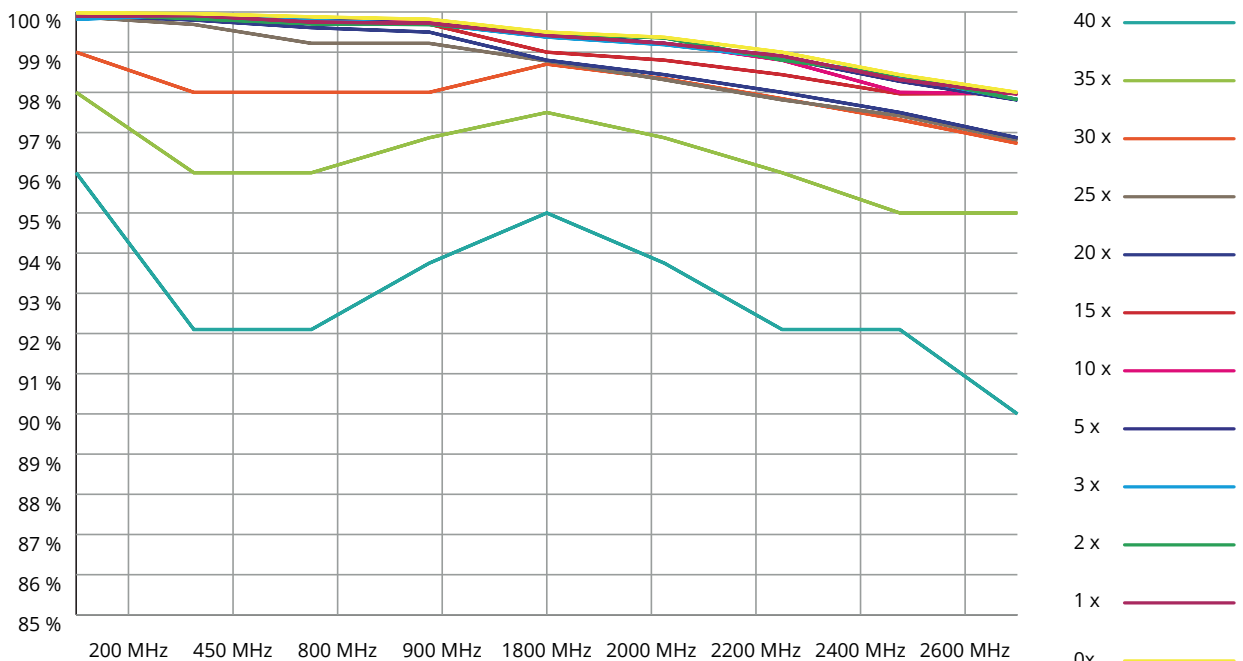
## Wash test

### Wash test - Topas CS - Ecover



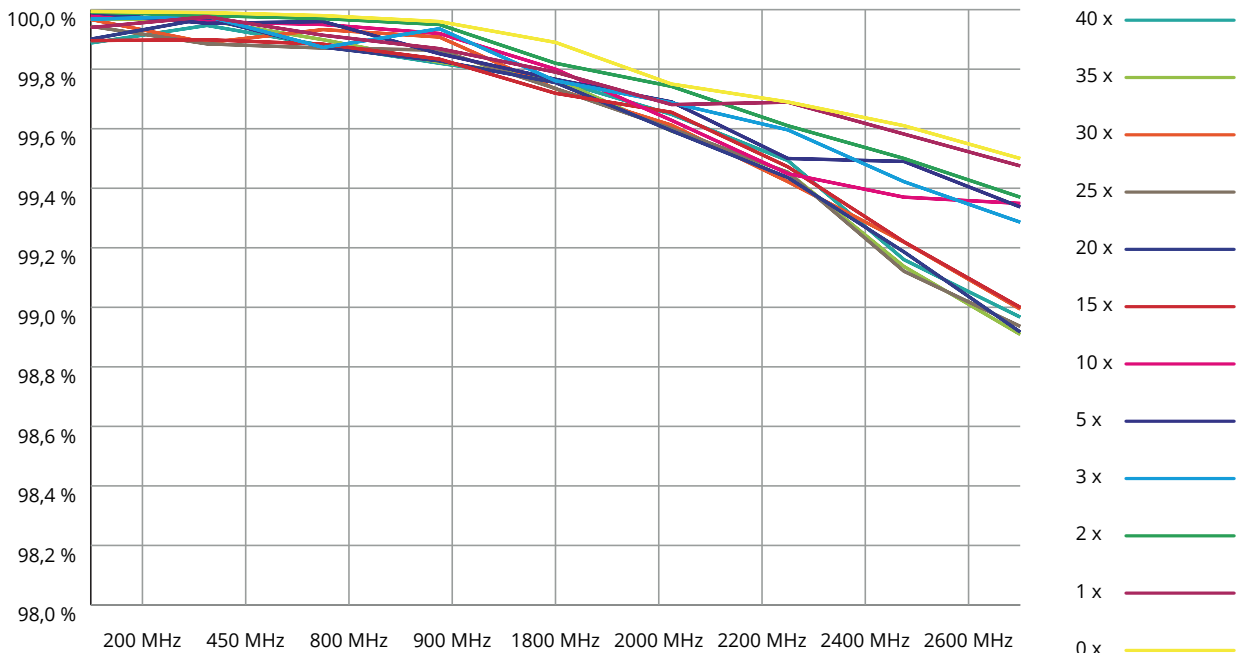
## Wash test

### Wash test - Topas CS - Sodasan



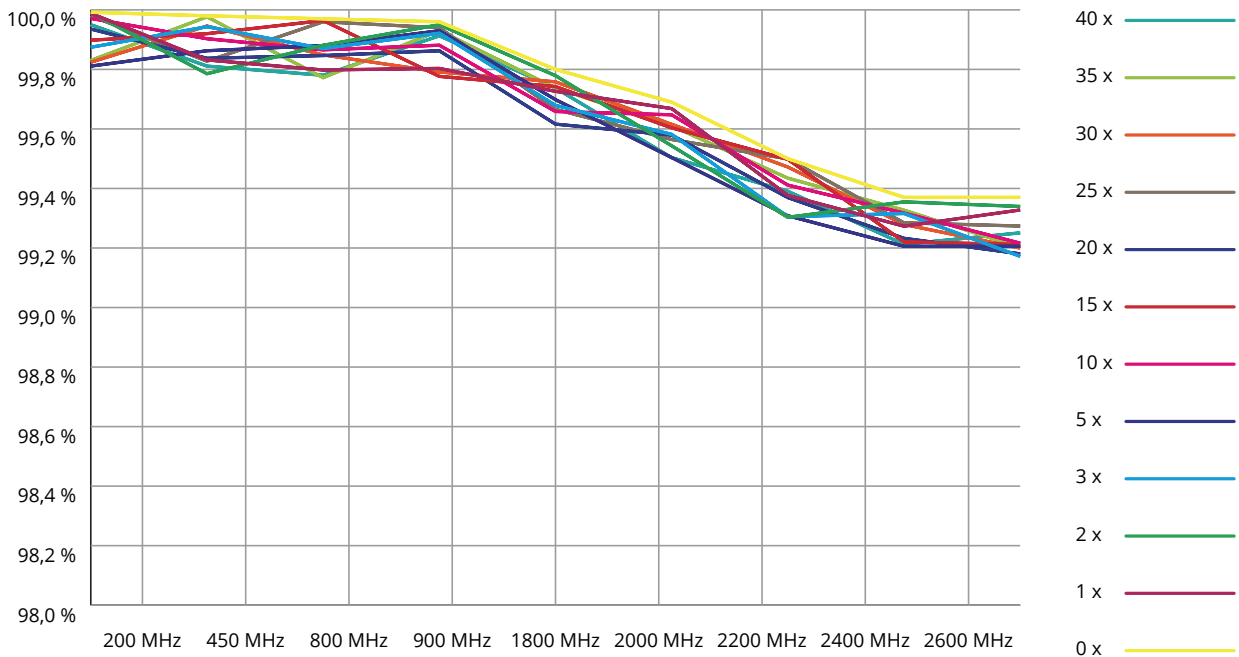
## Wash test

### Wash test - Sunshine 64 - Ecover



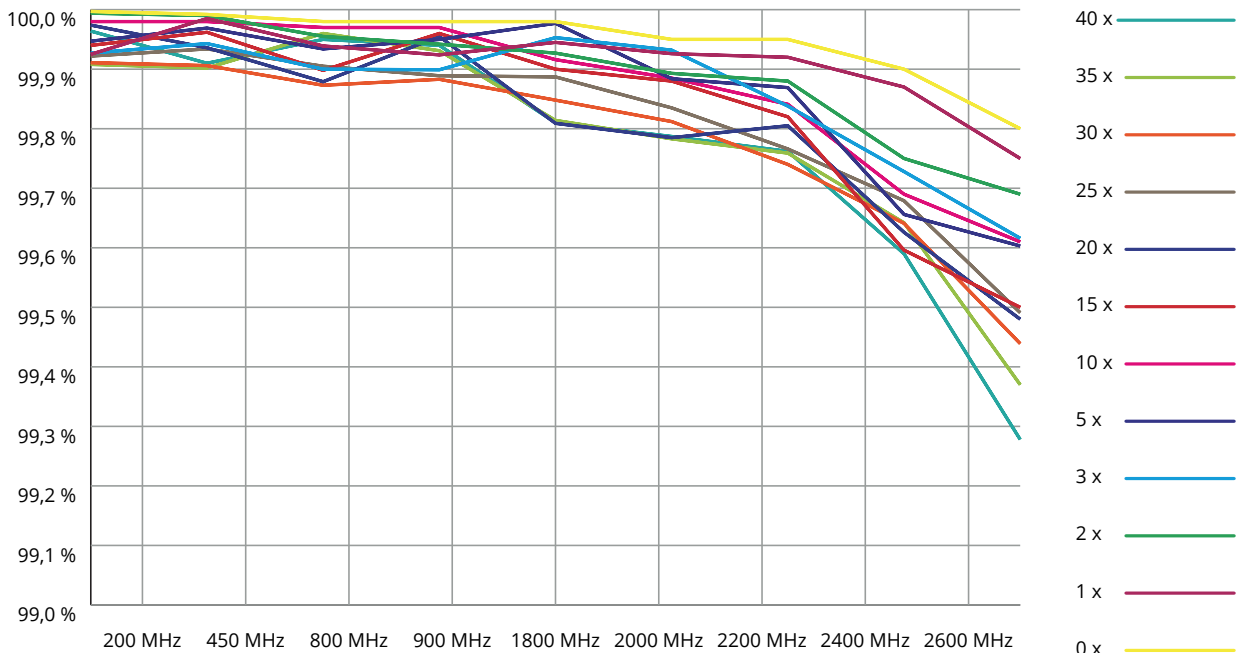
## Wash test

### Wash test - Sunshine 64 - Sodasan



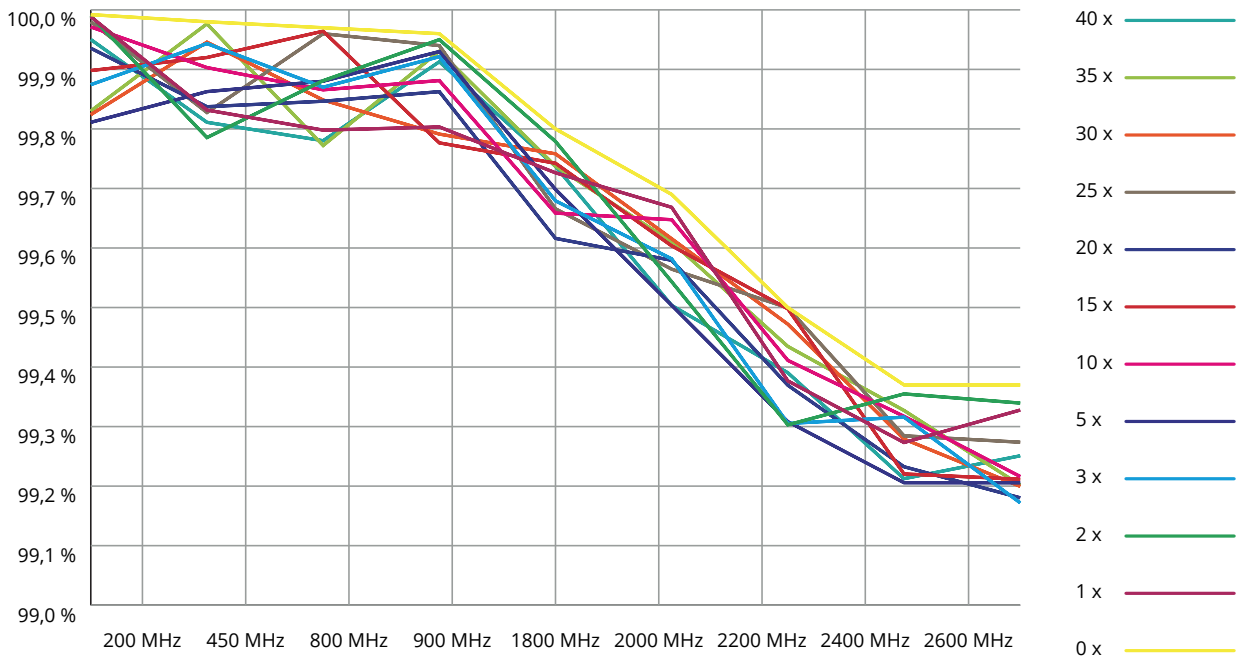
## Wash test

### Wash test - Swiss Shield Naturell - Ecover



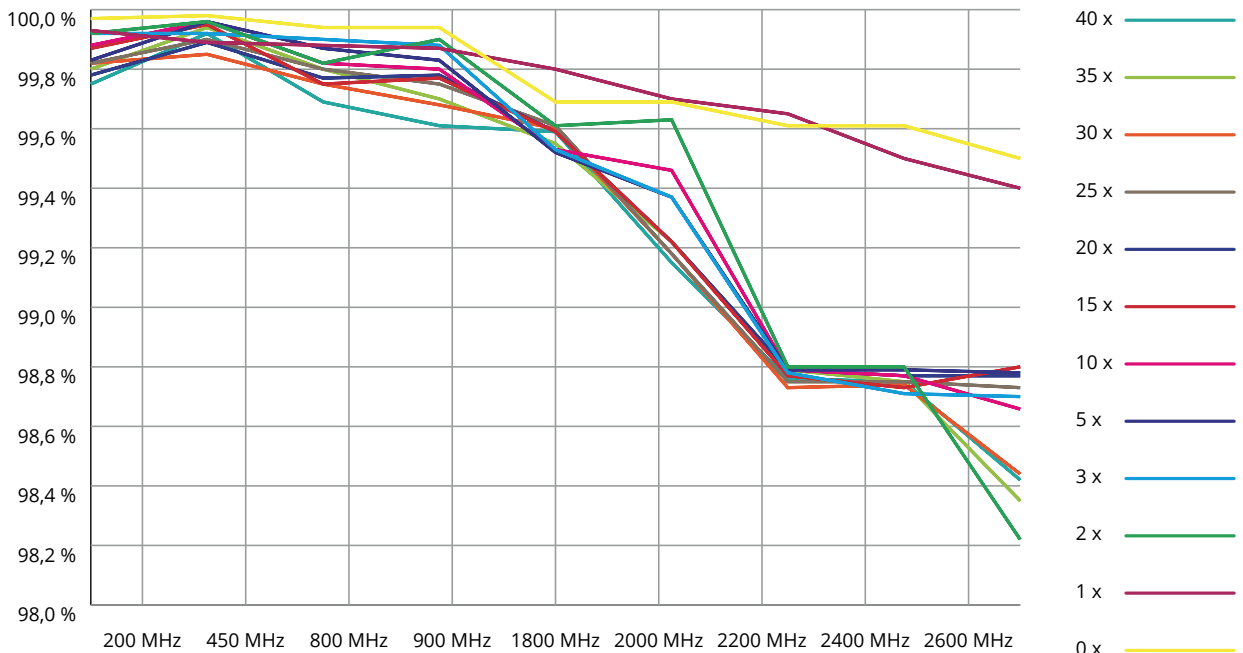
## Wash test

### Wash test - Swiss Shield Naturell - Sodasan



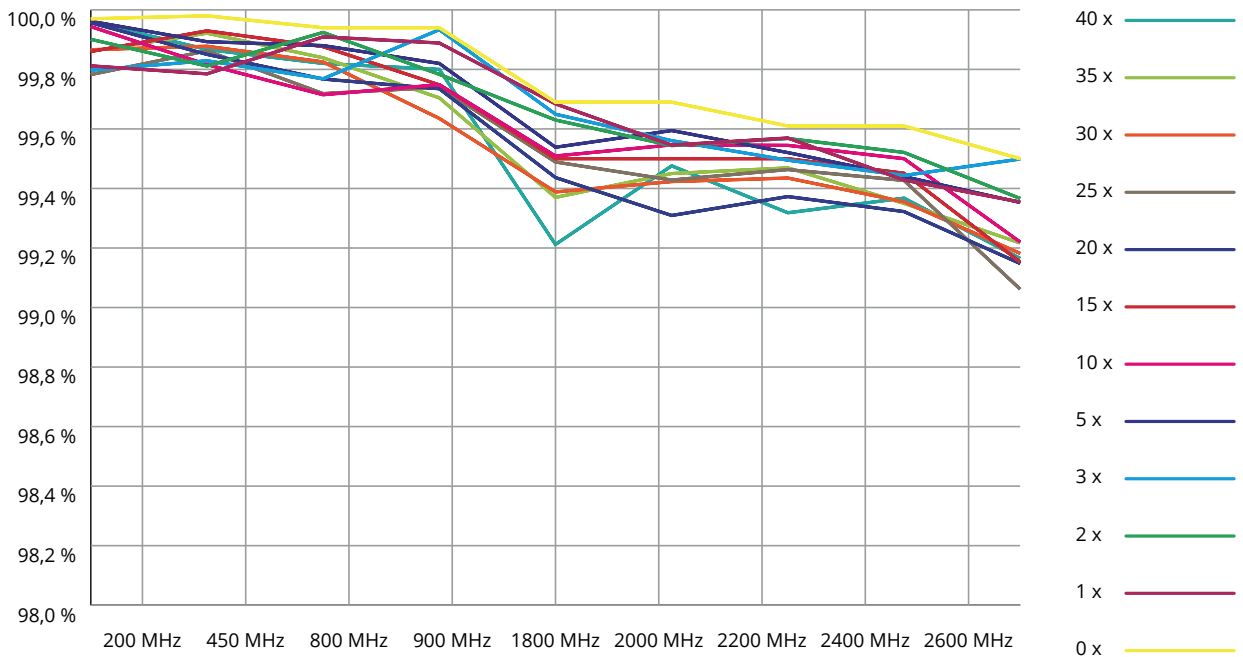
## Wash test

### Wash test - Swiss Shield Evolution - Ecover



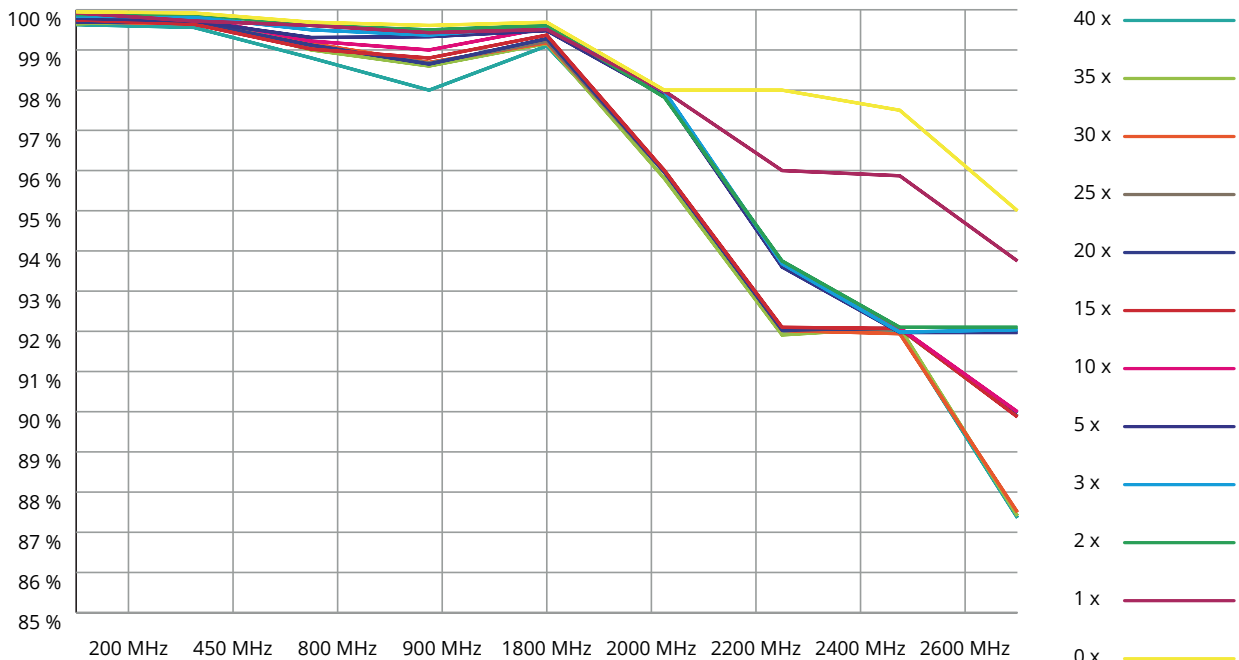
## Wash test

### Wash test - Swiss Shield Evolution - Sodasan



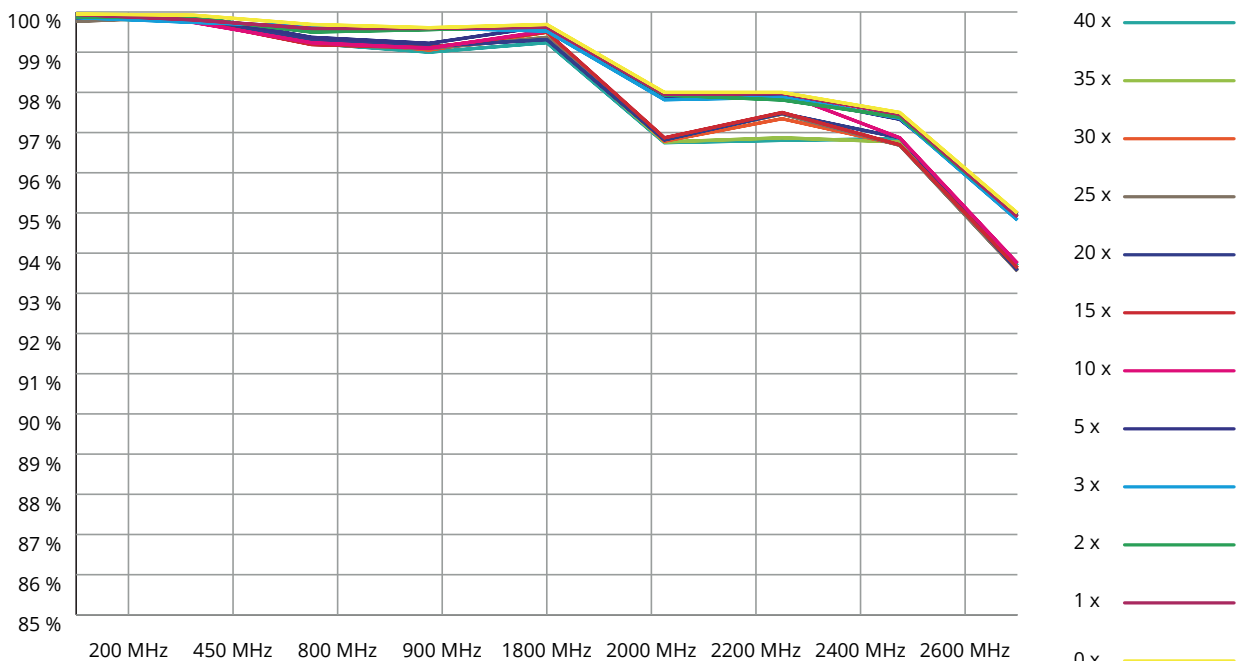
## Wash test

### Wash test - Swiss Shield Daylite - Ecover



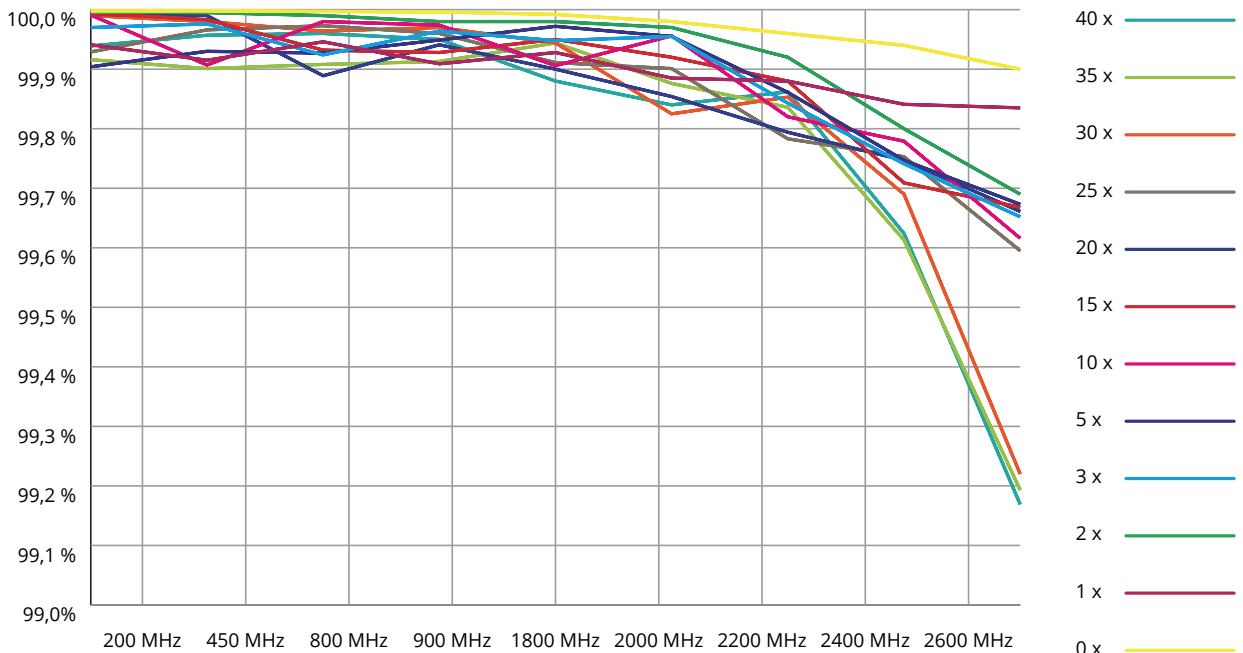
## Wash test

### Wash test - Swiss Shield Daylite - Sodasan



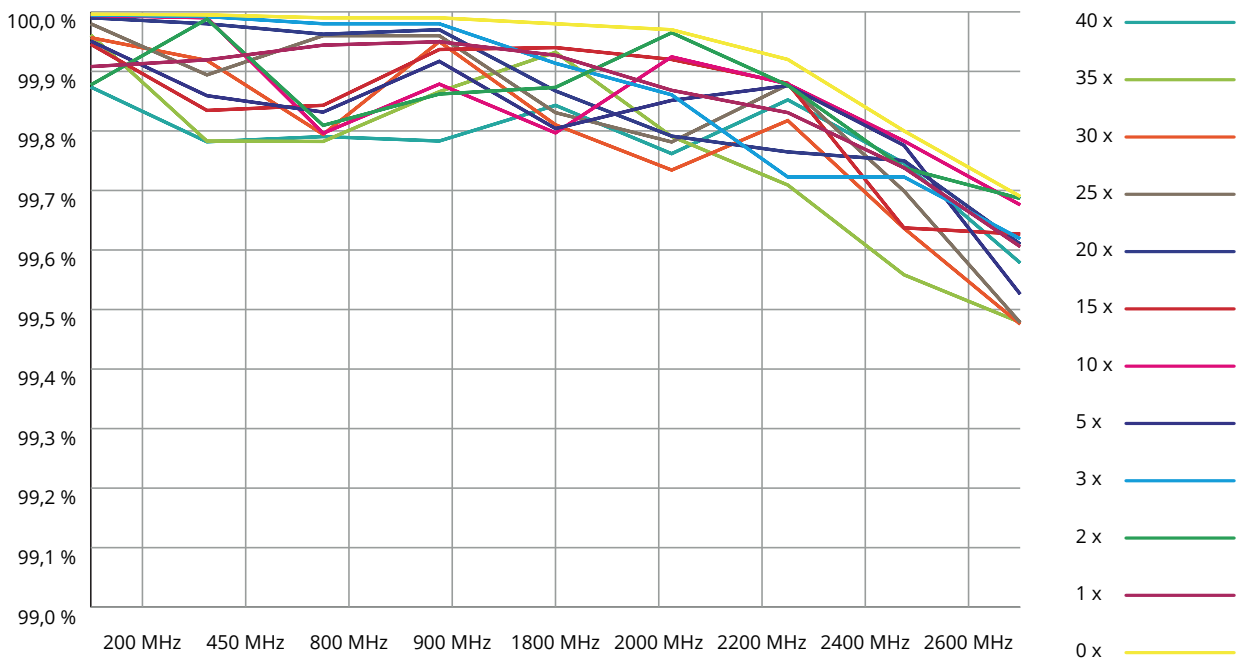
## Wash test

### Wash test - Picasso - Ecover



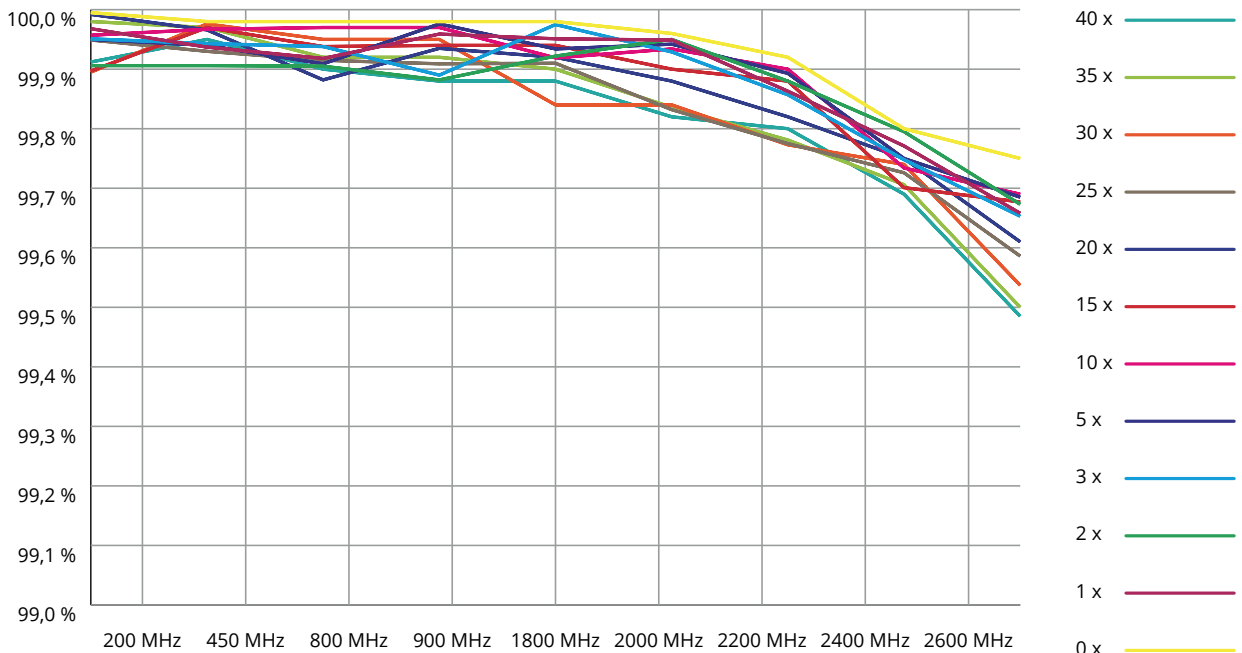
## Wash test

### Wash test - Picasso - Sodasan



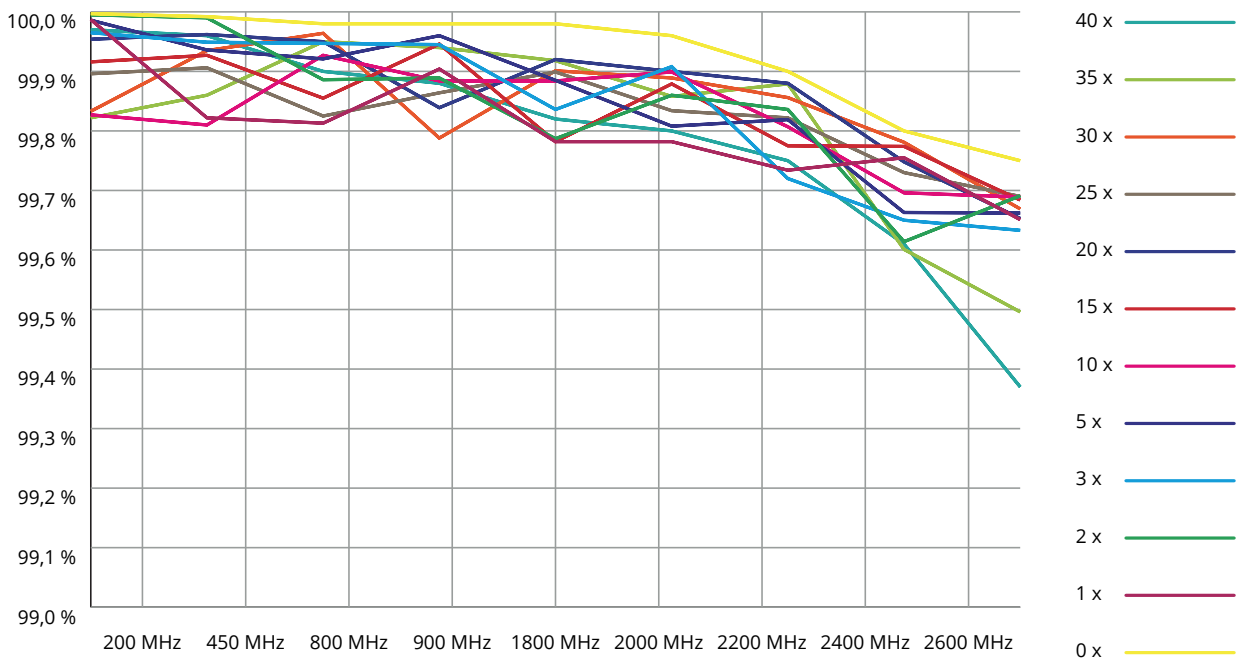
## Wash test

### Wash test - Dali - Ecover



## Wash test

### Wash test - Dali - Sodasan



## Washing instructions home textiles

### Further information

#### Further information

#### Colour fastness (Dali+Picasso+Swiss Shield Naturell)

Shades, colour differences and batik-like discolourations are not manufacturing defects and do not represent quality defects. Silver-plated products or products made of natural cotton are subject to colour change. This usually has no influence on the screening attenuation of the material.

#### Washing temperatures

Higher washing temperatures are not necessary due to the antibacterial properties of silver.

#### Storage

If you do not use the purchased product immediately after purchase, we recommend that you leave it in its original packaging until use and store it in a dry place at normal room temperature (20 °C +/- 2 °C and 50 % +/- 10 % humidity). The storage location should not be exposed to direct sunlight and should be free from acidic and alkaline media.

## Washing instructions home textiles

### Frequently asked questions

#### FAQ

Durability of shielding textiles?	Shielding textiles are subject to chemical and mechanical wear just like conventional textiles. Do not wash shielding textiles too often and only ever wash them according to these instructions in order to achieve maximum durability. Measure from time to time. If your shielding textile has no or no longer sufficient attenuation, you should replace it. Biologa Danell has no influence on your environmental variables.
Can I also use shielding textiles outdoors?	Never use shielding textiles outdoors! Exclusively indoors in front of windows, doors, walls and on ceilings.
Which silver is used in shielding textiles?	Biologa Danell uses microsilver in shielding textiles. We does not sell products with incorporated nanoparticles.
Can the incorporated silver drop off the textile?	The silver is so firmly bonded to the yarn that it will not come off under normal mechanical stress. This is additionally reinforced by insulation.